



Ideal Media SAN Solution



Yotta-Sport

Introducing the all new dual controller 4Gb FC-SATA II / U4-SATA II Yotta Sport, Ideal for the Media SAN Solution.

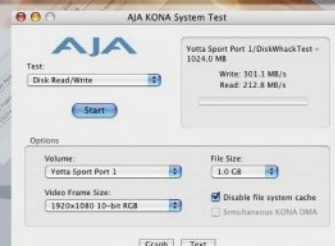
www.axus.com.tw



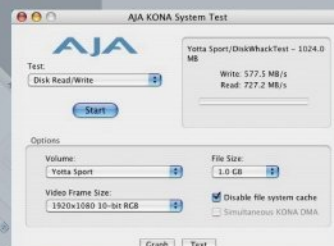
The performance test is based on

Server Side
Apple G5 with 1Gb RAM
Alto Celerity FC-42ES

Attached Storage
Yotta Sport



Single Controller



Dual Controller

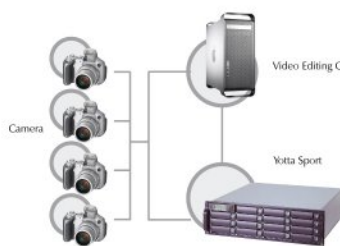
Model	Yotta Mini-Sport	Yotta Sport
Appearance		
Part Number	YI-065ApEU4N	YI-065ApEF4N
Controller #	1	2
RAID Levels	0, 1, 3, 5, 6, 9+1, JBOD	
Cache Support (Write back)	Fixed 128MB DDR SDRAM onboard with ECC Protection	Up to 1 Gb
System Type	Tower	Rackmount
Host Interface	Single Ultra 320 SCSI Channel/Dual 4Gb Fibre Channel	Dual Ultra 320 SCSI Channel/Dual 4Gb Fibre Channel
Host Transfer Rate	320MB/s/4Gb/s	
Disk Interface	SATA II	
Hot Swap and Redundant	Yes (Hard Disk, Fan Module), Optional Redundant Power Supply	
Disk Channel	6 Disk Channels	16 Disk Channels
LAN	Web browser-based RAID Manager via Built in 10/100 Ethernet Port	
Online Array Roaming	Yes	
Online Capacity Expansion and RAID Level Migration	Yes	
Power Supply	Single 300 ATX Power Supply / Optional Redundant Dual 230W Power Modules with PFC Feature	Redundant Dual 460W
Dimensions	166mm(W)*285mm(D)*346mm(H)	446.4mm(W)*495mm(D)*132.4H(mm)

*Specification subject to change without notice. All trademarks or registered trademarks are properties of their respective owners.

AXUS Microsystems Inc.
12F, No.800, Chung Cheng Rd., Chung Ho City Taipei Hsien, Taiwan, R.O.C.
Tel: +886-2-32348686 Fax: +886-2-32341515 Web: www.axus.com.tw

Dual High Performance Controller

Dual high performance controller can be stripped together by the OS to achieve tremendous high



All New Yotta Dual Controller In the Video Market

The dual controller FC-SATA II / SCSI-SATA II Yotta Sport series can be stripped together by the operating system to achieve up to 700MB/s total throughput.



All New Yotta Sport In the Digital Image Market

The lightning fast with enhanced security in mind, the Yotta Sport can help to improve your everyday work productivity by shorten the write/read time of a large image file.

Supports 4:4:4 HD Applications
Easily supports 10-bit HD
Ideal for uncompressed HD editing
Supports Win, Mac, Linux, SGI IRIX and Solaris OS
Supports 4TB or more per controller

Dual Controller Design (Yotta Sport Only)

Double over-all performance at the price of half. Axus knows how important it is to handle today's data-intensive application at low cost. Dual controller Yotta is brought to the market to meet that requirement.

EZSecur Lock

The user-friendly lock is designed with keyless and secure two steps safety measurement to prevent accidental removal of the hard drive.

Smart Redundant Fan

Striking the balance between thermal and acoustics, Axus's smart redundant fan operates at a highly efficient cooling mechanism. The design of the 2 linear redundant fans in a module works more efficient ventilating heat out from the rear. The hot swappable fan within the fan module can be swapped in case of malfunction within seconds.

Multiplex LCD (Yotta Sport Only)

Accommodating user friendly and appearance, Axus has designed the LCD module based on a single LCD screen which can be used to monitor and configure both controller within the chassis. To monitor and configure controller can be done by a single push of a button on the LCD with indication.

Advanced heat dissipation

Axus' genuine advanced heat dissipation design keeps hard drives at a low operating temperature by redirecting drive's heat to the aluminum drive wall which ensures a longer life span of the hard drives.

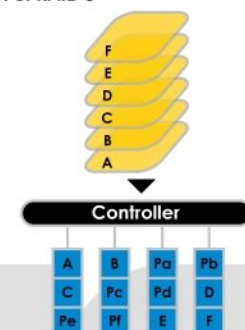
Modularized Architecture

The best about this RAID sub-system is the people behind it. It is built by a group of professionals who knows RAID. Our world renowned engineers not only providing world's unique design but also are stay-by and ready to help if there are any questions or problems.



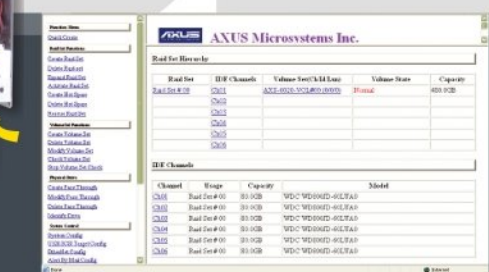
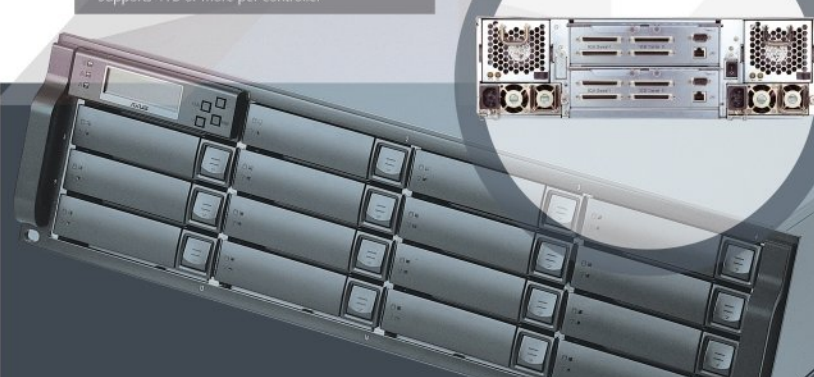
RAID Configuration Support up to 16 arrays sets 16 volume sets RAID Level 0, 1, 3, 5, 6, JBOD

Concept of RAID 6



Q: Why the Extra Parity?

A: From our past experience when failure occurs on single drive within array, it is anticipated that during rebuilding phase another drive is likely to fail, due to drives are installed at the same time. We know how valuable your data is and that is why we enhanced our RAID engine with RAID 6 to permit 2 drives failure at the same time and still having a working array. With extreme data security results in tremendous work efficiency. Since with RAID 6 enhancement data lost is cut down to minimum. Rather spending time on recovering data, now the total focus can be on the productivity.



Easy but powerful web based manager, enables the RAID array configuration, system hardware monitoring, error alert can be all done at your finger tips.