

- Simplify HBA configuration and management
 - A single, integrated GUI based management application for QLogic® SANblade iSCSI HBAs
- Maximize IT resources
 - Manage HBAs in the local host as well as all others on the network
 - Use diagnostic tools: ping, connection errors, ARP table
 - View QLogic SANblade iSCSI HBA attributes, target attributes, and statistics
 - Download new firmware and BIOS
 - Set addresses and firmware options
- Simplify storage area network (SAN) management
 - Inventory/audit information
 - Quickly access pertinent information on QLogic iSCSI HBAs anywhere on the SAN
- Integrate with other management solutions
 - Compatible with third-party management applications
- Broad OS support: Windows, Linux, and Solaris

SANsurfer iSCSI HBA Manager is a comprehensive application for configuration and management of QLogic SANblade iSCSI HBAs.

The application's intuitive point-and-click GUI provides centralized management of QLogic HBAs in local and remote systems. Some of the key features of SANsurfer iSCSI HBA Manager available to IT and network administrators include:

- Asset management of server and attached target systems
- Information on addresses and version numbers for drivers, firmware, and hardware
- Configuration access for local and remote HBAs: discovery, configuration, and monitoring
- iSCSI, TCP, IP and MAC layer statistics
- Diagnostic monitoring
- Download new firmware for feature updates
- Change iSCSI firmware parameters on multiple HBAs
- Update HBAs with new boot code

SANsurfer iSCSI HBA Manager's powerful diagnostic and statistical tools enable IT professionals to reduce the time needed to optimize the performance of their networks. In addition, the intuitive GUI reduces the time needed to gain proficiency on using the application.

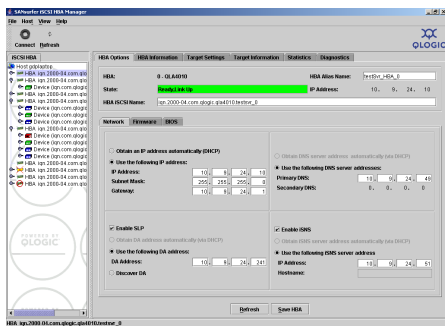
SANsurfer iSCSI HBA Manager is complimentary to, and easily integrates with, existing management application solutions, enabling further management system consolidation.

SANsurfer iSCSI HBA Manager is the newest member of the QLogic family of HBA management applications. QLogic Fibre Channel (FC) HBAs are used extensively by major server and storage subsystem vendors, such as Dell, EMC, HP, IBM, and Sun. Most of these vendors also use QLogic's SANsurfer FC HBA Manager, taking advantage of the application's stable multi-generation design, which provides comprehensive, easy-to-use, HBA configuration and management functionalities. SANsurfer iSCSI HBA Manager provides the same capability for iSCSI.

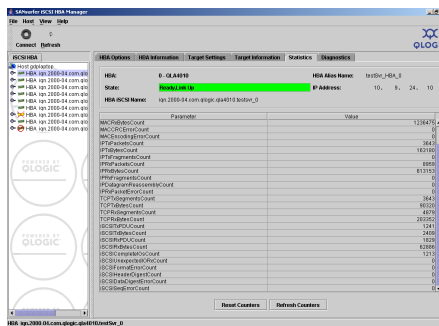
SANsurfer iSCSI HBA Manager is provided free of charge with QLogic's line of iSCSI HBAs. Unlike other HBA management tools that require IT or storage administrators to use multiple applications and utilities to configure HBAs, SANsurfer iSCSI HBA Manager is a self contained, all inclusive application that streamlines SAN management.

SANsurfer iSCSI HBA Manager is part of the comprehensive QLogic SANsurfer SAN management solution. The SANsurfer solution provides integrated management of QLogic FC HBAs and switches as well as iSCSI HBAs.

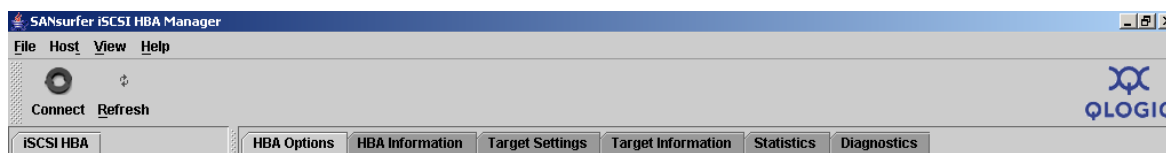
SANsurfer iSCSI HBA Manager is available on the QLogic Web site and on the SANsurfer CD, which is a compilation of QLogic management applications, drivers, firmware, and other resources.



Configure local and remote HBAs



View networking and iSCSI statistics



<p>Select the HBA Options tab to obtain or configure the following information about the HBA:</p> <ul style="list-style-type: none"> IP address Subnet mask Gateway HBA names DNS server address Enable SLP and iSNS Firmware values Firmware updates BIOS download <p>Easy access to configure basic and advanced features of an HBA.</p>	<p>Select the HBA Information tab to obtain the following information about the HBA:</p> <ul style="list-style-type: none"> HBA names Serial number MAC address IP address Version numbers for drivers, firmware, ROM, BIOS, iSCSI, and hardware Media type <p>Pertinent information available to provide inventory information.</p>	<p>Select the Target Settings tab to:</p> <ul style="list-style-type: none"> Configure iSCSI parameters per target Check negotiated iSCSI values Set persistent binding Configure CHAP values <p>Quickly customize connections with any connected iSCSI targets.</p>	<p>Select the Target Information tab to obtain the target:</p> <ul style="list-style-type: none"> iSCSI parameters TCP options Session information <p>Central location to find information on connected iSCSI targets.</p>	<p>Select the Statistics tab to check the following HBA statistics:</p> <ul style="list-style-type: none"> MAC IP TCP iSCSI <p>Multiple statistics in each category provides network performance and health indicators.</p>	<p>Select the Diagnostics tab to run or see the following:</p> <ul style="list-style-type: none"> Ping ARP table Connection error log <p>Run diagnostics centrally to reduce troubleshooting time.</p>
--	---	---	--	--	--

Operating System Support	
Windows	Windows Server 2003, Windows 2000, and Windows XP (management console only)
Linux	Red Hat Advanced Server 2.1 and 3.0 SuSE SLES 8
Solaris SPARC	8 and 9
Hardware Support	
HBA	SANblade 40xx series
Ordering Information	
QLogic Web site	SANsurfer iSCSI HBA Manager from the QLogic Web site— www.qlogic.com .
SANsurfer CD	Ships free of charge with QLogic's iSCSI HBA channel kits



[www.qlogic.com]

QLogic Corporation • 26650 Aliso Viejo Parkway • Aliso Viejo, CA 92656 • (800) 662-4471 or (949) 389-6000

© 2004 QLogic Corporation. Specifications are subject to change without notice. All rights reserved worldwide. QLogic, the QLogic logo, the powered by QLogic logo, SANsurfer, and QLA are registered trademarks of QLogic Corporation. SANblade, SANsurfer iSCSI HBA Manager, and SANtrack are trademarks of QLogic Corporation. All other brand and product names are trademarks or registered trademarks of their respective owners.